



Torchi manuali I

Manual etching presses



Art. PRESS-2642

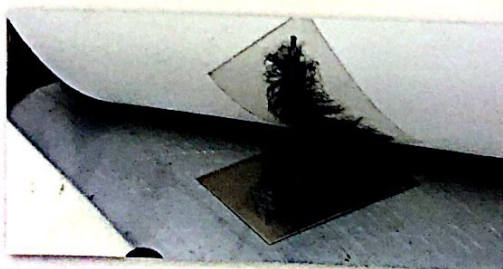
Torchio manuale per la stampa calcografica, struttura in acciaio con rullo di trascinamento godronato e rullo liscio superiore.

Corredato da un piano d'appoggio in ferro zincato da 3 mm, dimensione di stampa 26,5 x 42 cm con relativo feltro spessore 3 mm, peso 11 kg.

La precisione dei particolari meccanici, rende questo torchio professionale per le qualità di stampa.

Manual etching press for chalcographic printing, steel structure with lower drag knurled roller and smooth upper roller. Accompanied by a galvanized iron table top of 3 mm, size of printing 26,5 x 42 cm with felt of 3 mm thickness, weight 11 kg.

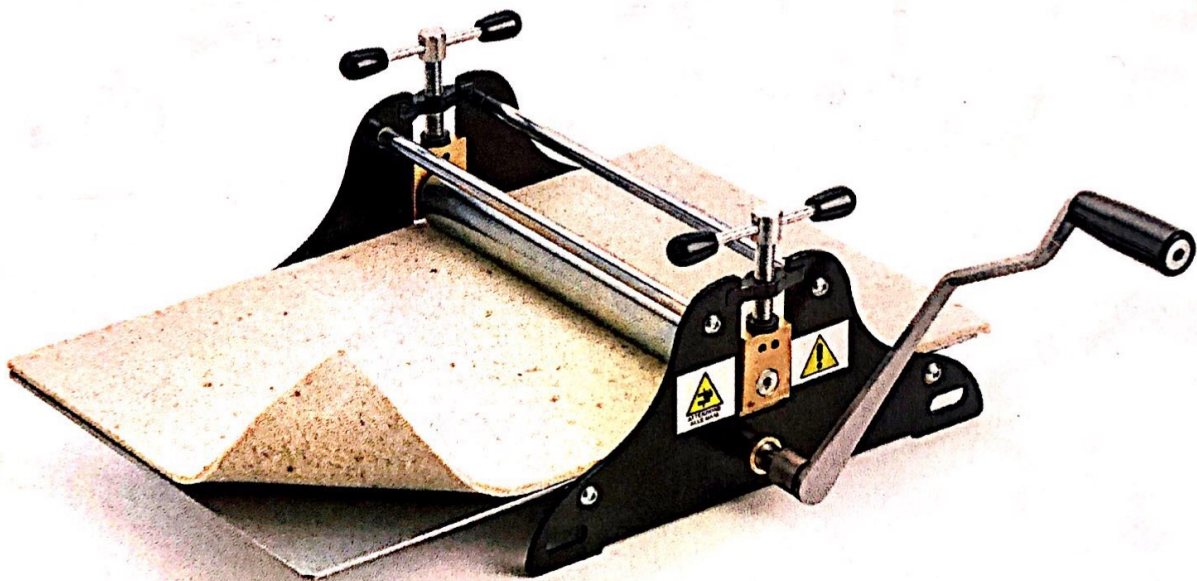
The precision of the mechanical parts, makes this etching press professional in print quality.



Opera realizzata dall'artista Work of Art by Artist:
Elisa Mestroni



**MANUAL USE
AND MAINTENANCE**
ENGRAVING PRESS



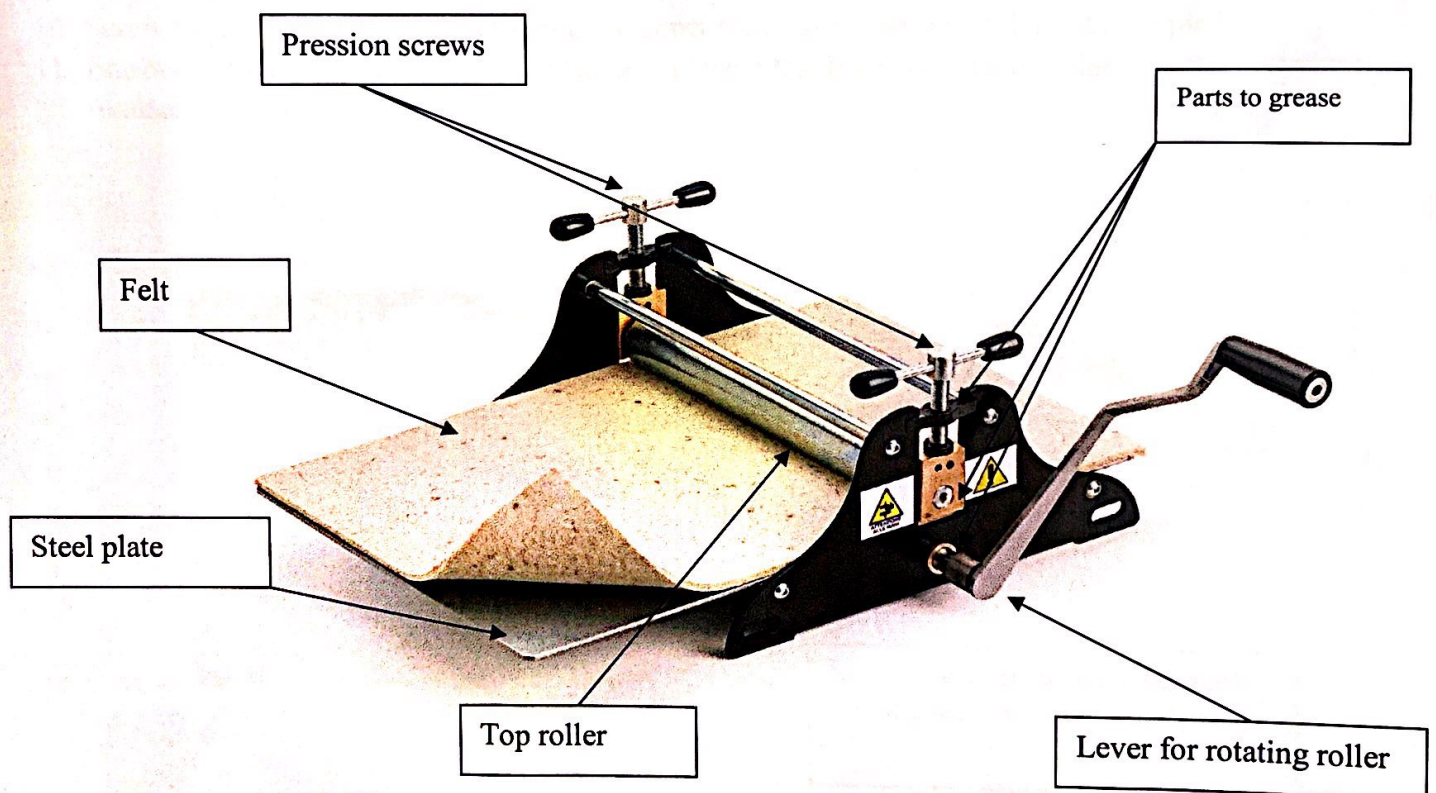
Etching Press _____ Art: PRESS-2642

CHAPTER 1

DESCRIPTION AND CHARACTERISTICS OF THE PRESS

1.1 **Manual press PRESS-2642** for chalcographic printing, **designed and made by RGM** with the collaboration of teachers and artists, is a simple machine to use and at the same time for **professional print quality**, thanks to the **precision of mechanical parts** and to the using of the highest quality materials.

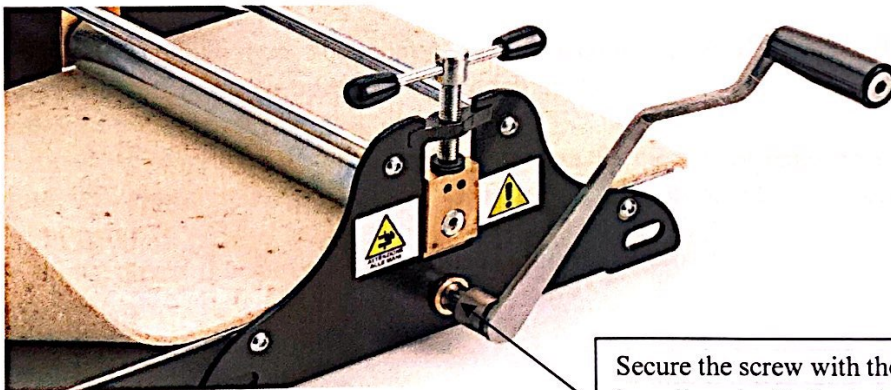
1.2 **Features: steel structure with knurled drag roller and smoothly on the top.** Diameter of 35mm. Accompanied by a table plate of 3mm galvanized steel on the felt 3mm thick. The print size is 26.5 x 42 cm. The overall weight of the packing is about 10/11 kg.



CHAPTER 2

OPERATING INSTRUCTION

- 1- Check the packaging and the press in all its mechanical parts, to verify that it has not been damaged during transport.
- 2- Fix the press to the table
- 3- Insert the lever to rotate the lower roller and fix it with the key provided
- 4- Grease all rotating parts
- 5- Loosen the pressure screws rotating in anticlockwise and clockwise several times keeping the line of the upper roller as parallel as possible with the lower roller
- 6- Remove the table plate and clean
- 7- Carefully clean the rollers
- 8- Replace the table plate between the rollers
- 9- Place the felt on the table plate
- 10- Screw the pressure screws maintaining the upper roller as possible parallel with the plane
- 11- finished the work, clean and oil the press and place it inside its box in a dry place, so that it cannot oxidize.



Secure the screw with the supplied key aligned with the hole in the pin

PRESS-2642 Made in Italy

www.rgm-art.com